

## PRODUCT INFORMATION

### SERVA FastLoad 1kb DNA Ladder Cat. No.: 39317

## PRODUCT DESCRIPTION

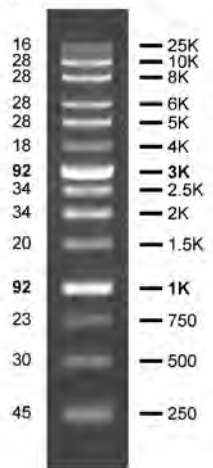
An unique combination of PCR products and a number of proprietary plasmids digested with appropriate enzymes to yield 14 fragments, suitable for use as molecular weight standards for agarose gel electrophoresis. The molecular weight of the ladder ranges from 250 – 25,000 bp. The approx. mass of DNA in each band is provided for approximating the mass of DNA in comparably intense samples of similar size.

**Application** Agarose gel electrophoresis

### Features

- Number of bands: 14
- MW range: 250 – 25,000 bp
- Ready to use solution
- Concentration: 104 µg/ml
- 1,000 and 3,000 bp bands: increased intensity to serve as reference points
- Contains orange G and xylene cyanol FF as tracking dye

DNA Mass (ng/5µl)



0.7 % TAE agarose gel

**Storage** -20 °C, please aliquot in a small volume for prevention of repeated freezing & thawing.

**Important** At 4 °C stable for 12 months.  
At 25 °C stable for 6 months.

**Usage information** Recommended loading volume: 5 µl/well